



48 HARWELL ROAD ABINGDON, OX14 4BW

£1,400 PER WEEK

Welcome to this beautifully refurbished three-bedroom bungalow in the sought-after village of Sutton Courtenay, perfectly located for short stays, corporate lets, and relocations. Finished to a high standard throughout, the property combines modern comfort with practical living, making it ideal for both work and leisure.

The property offers three well-proportioned double bedrooms, all tastefully furnished to create a calm and relaxing environment. One bedroom features a super king-size bed, which can also be configured as two single beds on request — please let us know your preferred layout ahead of your stay so we can prepare the property accordingly.

The bright living room provides comfortable seating, ideal for unwinding after a long day. The modern family bathroom includes a full-size bath with overhead shower, stylish tiling, and quality fittings.

William | Jones

Estate Agents

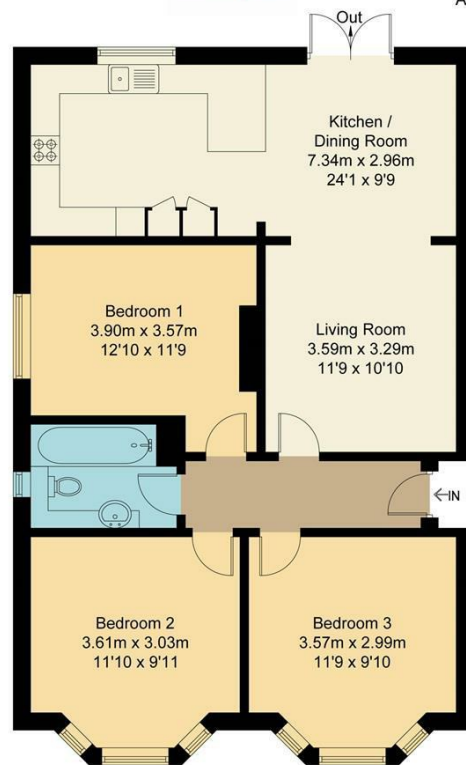


William Jones

Harwell Road, OX14

Approximate Gross Internal Area = 84.30 sq m / 907 sq ft

For identification only - Not to scale



Ground Floor

Not to scale, for illustration and layout purposes only.
© Mortimer Photography. Produced for William Jones.
Unauthorised reproduction prohibited



Energy Efficiency Rating		
	Current	Potential
Very energy efficient - lower running costs		
(92 plus) A		
(81-91) B		
(69-80) C		
(55-68) D		
(39-54) E		
(21-38) F		
(1-20) G		
Not energy efficient - higher running costs		
England & Wales		
	EU Directive 2002/91/EC	

Agents Note: Whilst every care has been taken to prepare these particulars, they are for guidance purposes only. All measurements are approximate and are for general guidance purposes only and whilst every care has been taken to ensure their accuracy, they should not be relied upon and potential buyers/tenants are advised to recheck the measurements

Head Office Lettings
210 Broadway
Didcot
Oxfordshire
OX11 8RN

01235 812229
didcot@wjestates.co.uk
www.wjestates.co.uk

William Jones

Estate Agents